

# NV55 Self Propelled Broom

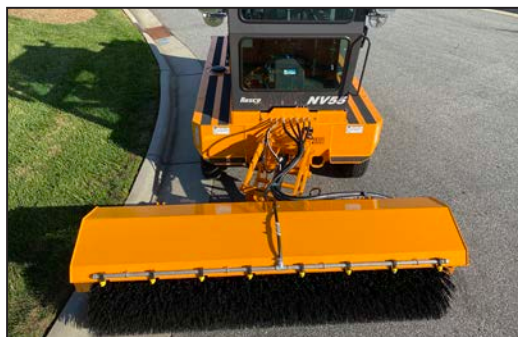
**Rosco**  
A LeeBoy Company



## Performance Features:

The broom for professionals, the NV55 offers many advantages linked to simple operation and superior sweeping action. The multi-functional joystick control lever combined with fingertip controls provide precision movement during operation. The standard configuration features wrap around windows that give the operator remarkable visibility while residing in the comfortable fully-enclosed cab. Requiring only one person, the quick-change core system permits the replacement of a brush in minutes limiting downtime.

- 74 hp (55 kw) Hatz Diesel Engine
- 6,900 lbs (3,129 kg) weight with water
- 7' 6" (2.28 m) Diameter Heavy-Duty Frame with PolyTube Brush
- Joystick Control for Travel and Broom Functions
- Hydrostatic Drive
- Variable Brush Speed and Down-Pressure Control
- Heavy Duty Gear Pump and Brush Motor
- Fully Enclosed Cab with ROPS and Sliding Window
- Suspension Seat and Tilt Steering Column
- **Optional Side-Shift Broom**



# NV55 Broom Specifications



Dimensions	<ul style="list-style-type: none"> <li>- Length: 15' 6" (4.73 m)</li> <li>- Width: 7' 9" (2.36 m) not tilted</li> <li>- Height: 9' 1" (2.76 m)</li> <li>- Wheelbase: 7' 3" (2.2 m)</li> <li>- Turning Radius: 4' 2" (1.274 m)</li> <li>- Total Weight: 6,900 lbs. (3,129 kg) w/ water</li> </ul>
Engine	Hatz diesel, 74 hp (55 kw)
Capacities	<ul style="list-style-type: none"> <li>- Fuel: 30 gallons (114 l)</li> <li>- Hydraulic reservoir: 25 gallons (95 l)</li> </ul>
Transmission	<ul style="list-style-type: none"> <li>- Hydrostatic drive</li> <li>- Speed infinitely variable, 0 to 12 mph (19 kph) low</li> <li>0 to 22 mph (35 kph) high range</li> </ul>
Front Axle	<ul style="list-style-type: none"> <li>- Heavy-duty, limited slip differential</li> <li>- Tires: ST 225 x 75-15R, load range E</li> <li>- Rim: 4 steel disc type, 15 x 6"</li> </ul>
Rear Axle	- Heavy-duty truck type, oscillating
Brakes	<ul style="list-style-type: none"> <li>- Two wheel wet disk type brakes</li> <li>- Hand operated parking brake</li> <li>- Foot operated de-stroke breaking of the hydrostatic drive</li> </ul>
Heavy-Duty Hydraulic System	- Two separate circuits, one for travel, one for brush control and power steering
Instrumentation	<ul style="list-style-type: none"> <li>- PV 380 digital display</li> <li>- Oil pressure, water temperature, voltmeter, tachometer, hour meter, fuel gauge</li> </ul>

Brush	<ul style="list-style-type: none"> <li>- Joystick control</li> <li>- Variable down pressure and speed control</li> <li>- Quick change design allows operator to change out brush quickly without tools</li> <li>- Drive mechanism consist of direct hydraulic motor enclosed in broom core</li> </ul>
Brush Frame	<ul style="list-style-type: none"> <li>- 7' 6" (2.28 m) x 32" (.81 m) diameter poly tube</li> <li>- Sweep angle: 30° left or right standard (50° right and left with side-shift option)</li> <li>- Speed 160 rpm, variable by engine speed</li> </ul>
Additional Standard	<ul style="list-style-type: none"> <li>- Fully enclosed cab with ROPS</li> <li>- Suspension seat with safety belt, horn, dual west coast style mirrors and dome light</li> <li>- Tilt steering column</li> <li>- 2 convex spot mirrors</li> <li>- Two LED head lights, stop, turn, tail, rear working lights and amber strobe light</li> <li>- 2 year standard warranty</li> </ul>
Optional Equipment	<ul style="list-style-type: none"> <li>- Side-shift brush head, 18" right and left</li> <li>- Cab air filtration and pressure monitor system (MERV 16 rated)</li> <li>- Air conditioner and heater</li> <li>- Two 75 gallon (283 l) water tanks with spraying system</li> <li>- Combination poly wafers (in lieu of poly tube)</li> <li>- Combination poly/steel wafers (in lieu of poly tube)</li> <li>- Poly/steel tube brush (in lieu of poly tube)</li> <li>- Forward/reverse brush rotation</li> <li>- Rear wiper and washer assembly</li> <li>- Front windshield washer (wiper is standard)</li> <li>- Spare tire and mount</li> <li>- Back-up/reverse camera with in-cab color display, cab model only</li> <li>- Radio/CD/Bluetooth cab install</li> </ul>



ST Engineering LeeBoy, Inc. ■ 500 Lincoln County Parkway Extension ■ Lincolnton, NC 28092 ■ 704.966.3300  
[www.LeeBoy.com](http://www.LeeBoy.com)



LeeBoy and the LeeBoy logo are registered trademarks of ST Engineering LeeBoy, Inc. Equipment model names, slogans and subsidiary logos appearing in this collateral may be registered trademarks or the trademarks of ST Engineering LeeBoy, Inc. The technical data contained herein is subject to change due to continuous engineering and development. Accordingly, LeeBoy reserves the right to modify at any time. © 2020 ST Engineering LeeBoy, Inc. All rights reserved. BR-1105.6-EN