



**DYNAPAC**

**STEERING / FRONT WHEEL  
ASSISTANT -FWA- SYSTEM SETTINGS**

**PAVER F1000W**

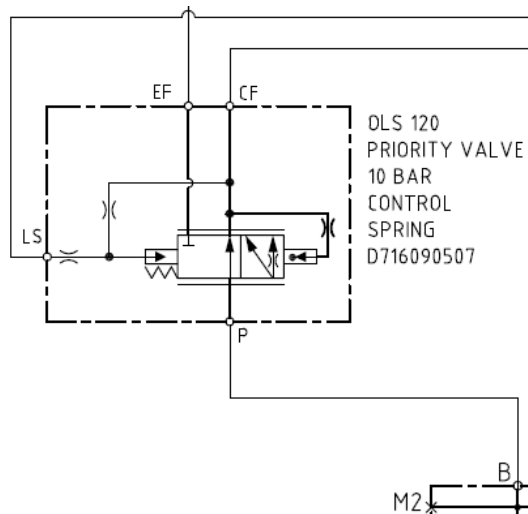
***DYNAPAC***

Part of the Atlas Copco Group



# Steering / FWA Priority valve

- Priority valve:
  - LS not moving = 0 to 40 psi
  - CF not moving = 250 psi
  - P not moving = LS + 150 psi
  - P & driving w/FWA on = 3000 psi, test it on M port



CF (Controlled Flow), goes to pressure to steering control valve on each console



LS port, goes to OLS on FWA and continue to LS on Pump

P port, comes from FWA pump pressure



EF (Excess Flow) port: FWA Valve Pressure



***Driven by innovation –  
committed to customer performance***



HOME

**DYNAPAC**

Part of the Atlas Copco Group